

POWER-STEERING SYSTEM SERVICE

Tools Needed

Deluxe-Power-Steering Machine #74900

Products Needed

SOLTEC™ Power-Steering Kit (Clear 2 Pack) #54002
which includes:

- ▶ SOLTEC™ Power-Steering Solution #50001
- ▶ SOLTEC™ Power-Steering Treatment #52001

SOLTEC™ Power-Steering-Service Kit Red (2 Pack) #54102 which includes:

- ▶ SOLTEC™ Power-Steering-Service Solution-Red #50101
- ▶ SOLTEC™ Power-Steering Treatment #52001

SOLTEC™ Ultima Power-Steering Kit (synthetic) #55202 which includes:

- ▶ SOLTEC™ Ultima Power-Steering Fluid #50201
- ▶ SOLTEC™ Power-Steering Treatment #52001



#74900



#54002



#54102

#55202

Step 1

Prepare the Deluxe-Power-Steering Machine by attaching the new fluid service hose & cap to a new Power-Steering-Fluid bottle and place onto the exchanger (*see Figure A*). The used fluid tank should have sufficient space to handle the quantity of product which is being exchanged. Verify that both the new and used fluid switches are in the “OFF” position (*see Figure B*). Attach the battery clips of the machine to the appropriate terminals—black clip to negative/red clip to positive (*see Figure C*).



Figure A



Figure B



Figure C

POWER-STEERING SYSTEM SERVICE

(Continued from front page)

Step 2

Insert the drain/fill hose into the power-steering reservoir (see [Figure D](#)) and attaches the service hoses from the Deluxe-Power-Steering Machine to the drain/fill hose adapter at the vehicle (see [Figure E](#)).



Figure D



Figure E

Step 3

The flush procedure begins with the vehicle's parking brake set and the engine running at idle. The wheels are in full lock position (see [Figure F](#)). Press the red-button on the remote to drain and remove the old contaminated fluid from the reservoir (see [Figure G](#)). Release the button to stop. **(Note: do not run the reservoir completely dry, this could damage the power-steering pump).** Immediately press the green button on the remote to add and fill the appropriate amount of new SOLTEC™ Power-Steering Solution into the reservoir. Release the green-button to stop the fluid flow. Turn the steering wheel from side to side several times to activate fluid flow. Place the wheels in the full lock position, and repeat the procedure until the entire contents of the SOLTEC™ Power-Steering Solution has been added. **At the end of the flushing process, leave the necessary space in the reservoir to add the SOLTEC™ Power-Steering Treatment #52001 (see [Figure H](#)).**

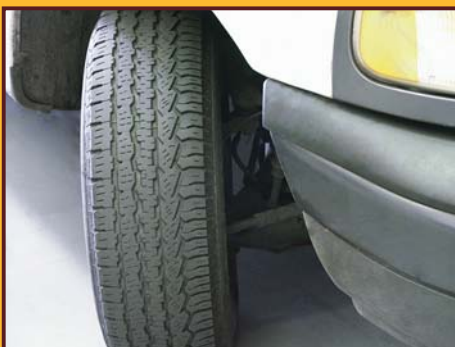


Figure F



Figure G



Figure H